

# solos

---

Daniel Haddad

Gabriel Pascolato

"quanto mais nos  
reaproximamos da  
natureza, mais  
precisamos nos  
munir de cultura."

# tendências

- loose tailoring
- jeans on jeans
- tecidos e técnicas naturais
- modularidade
- utilitário de luxo / techwear sofisticado
- workwear masculino
- minimalismo com twist
- quiet outdoor
- casual wear com alfaiataria
- bottom layering

# loose tailoring



# jeans on jeans



# utilitário de luxo



# refined workwear



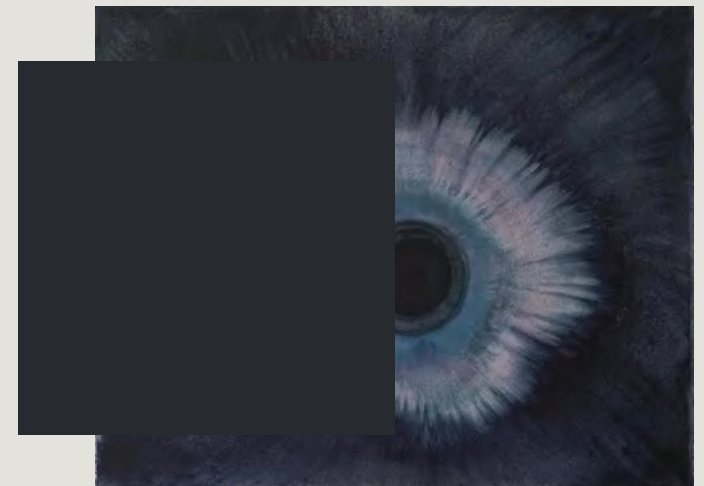
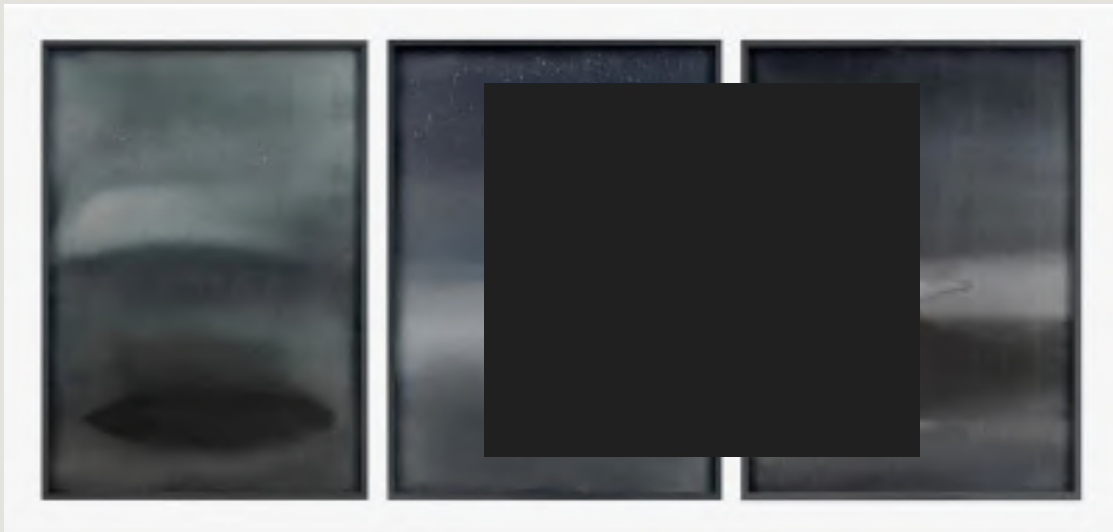
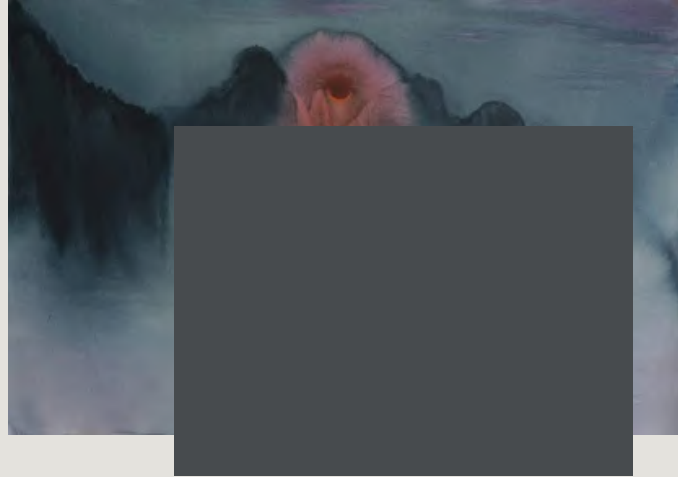
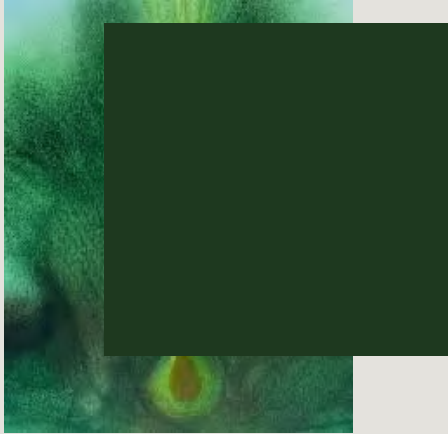
# casual wear com alfaiataria

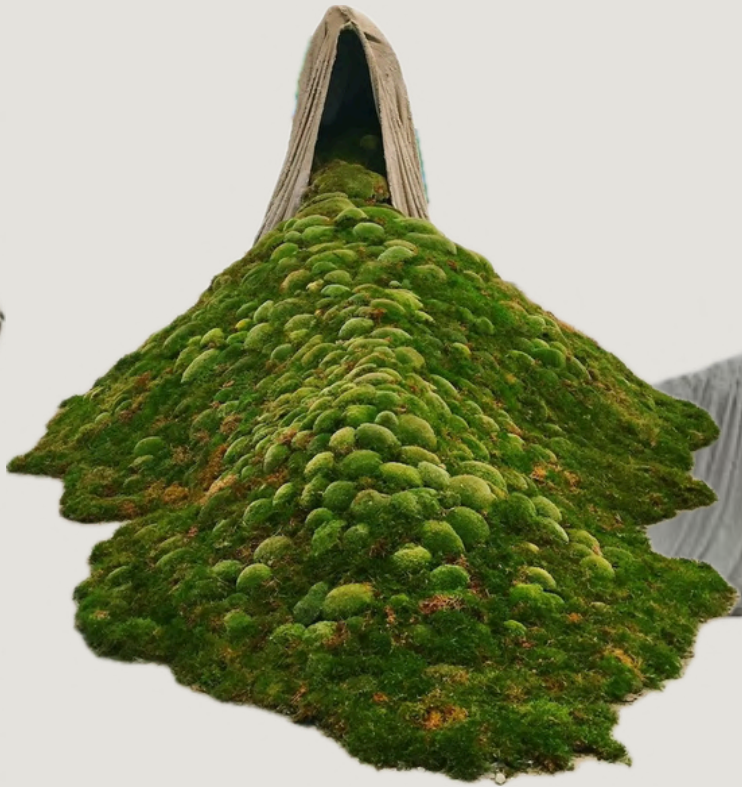


# minimalismo com twist



# cores





# conceito

Inspirada na obra do artista Thiago Rocha Pitta, a coleção explora a relação entre natureza e cultura: quanto mais nos aproximamos da natureza, mais precisamos de artifícios para habitá-la. Porém assim como uma trilha exige equipamentos, o trabalho pede por vestimentas consideradas que sejam considerados adequadas para tal ambiente. As peças transitam entre o utilitário e o convencional, entre o extra e o essencial. Com base em peças clássicas do guarda roupa masculino, a coleção propõe um jogo entre funcionalidade e sofisticação, questionando o que realmente é útil no vestir.



# público alvo

O público é formado por pessoas refinadas, com olhar apurado para o guarda roupa masculino e os cortes clássicos, mas que também valorizam a desconstrução e um olhar mais contemporâneo para as peças. São indivíduos cultos, com interesse por arte, arquitetura e design, que buscam roupas bem pensadas, com detalhes criativos e discretos. Apreciam viajar, estar próximos à natureza e equilibram o urbano com o contemplativo. Valorizam qualidade, modularidade, atemporalidade e sofisticação sutil nas escolhas de vestuário.

# materiais



algodão fio 70  
98% algodão 2%  
elastano  
132 g/m<sup>2</sup>

lã fria  
100% lã  
220 g/m<sup>2</sup>

lã fria  
100% lã  
220 g/m<sup>2</sup>

linho off  
73% linho 23% poliéster  
180 g/m<sup>2</sup>

linho puro  
100% linho  
135 g/m<sup>2</sup>

linho misto  
69% linho 31% poliéster  
180 g/m<sup>2</sup>

algodão fio 70  
98% algodão 2%  
elastano  
132 g/m<sup>2</sup>

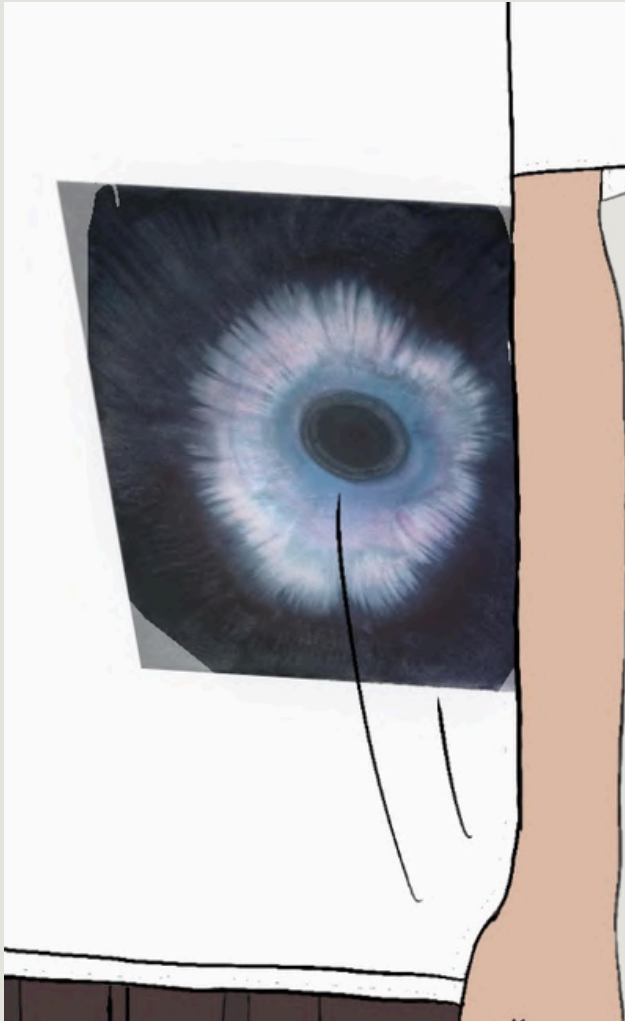
TPU  
100% poliuretano  
575 g/m<sup>2</sup>

# maquetes



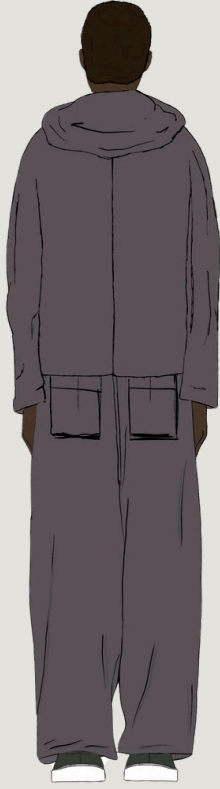
técnica de enceramento com cera de abelha, utilizada antigamente para impermeabilizar tecidos, conversando com o tema da coleção sobre natureza e sua relação com a roupa como meio de sobrevivência.

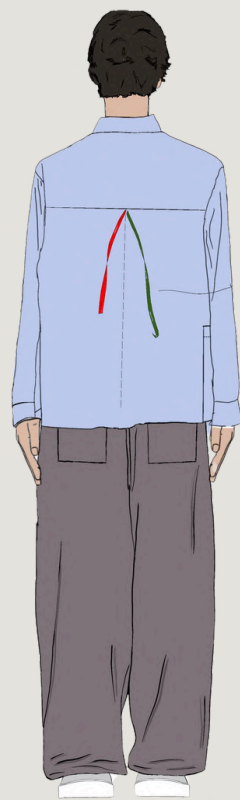
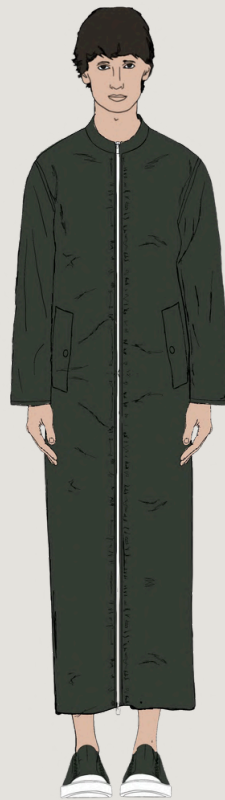
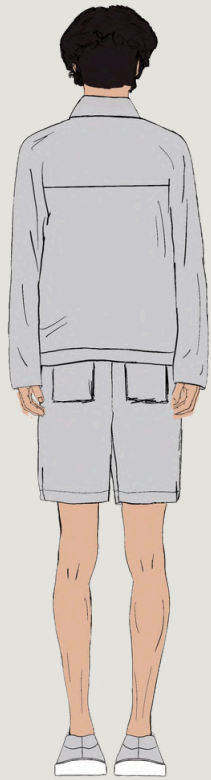
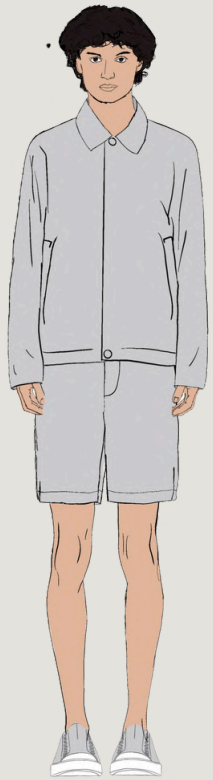
# estampas

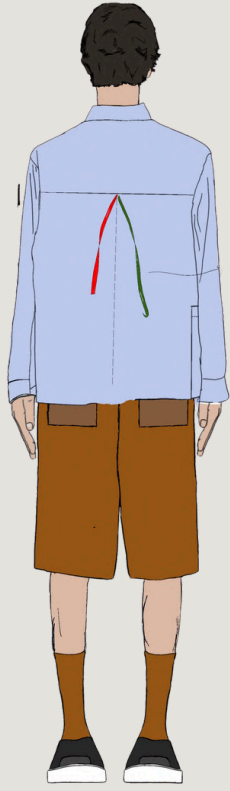
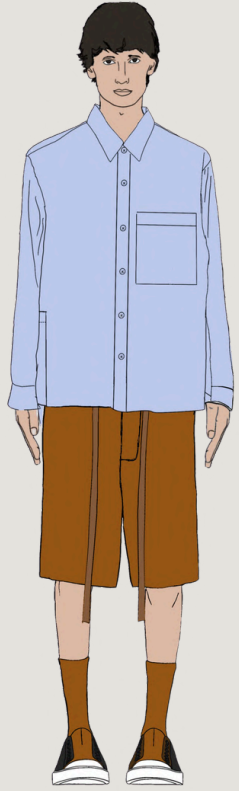


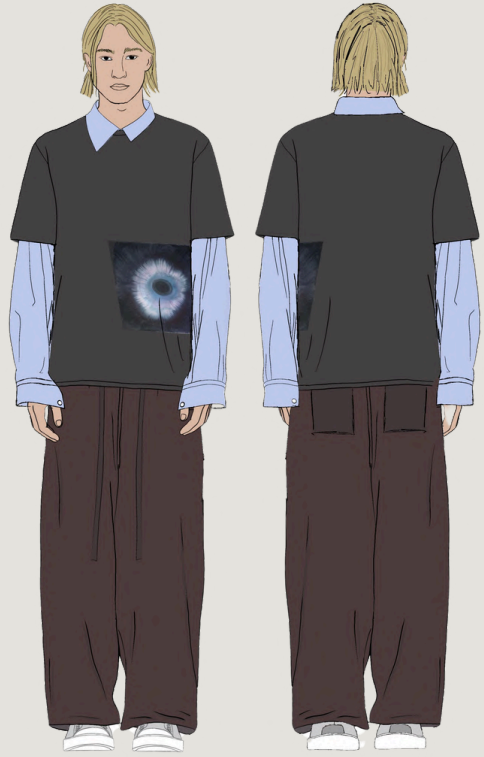
# croquis

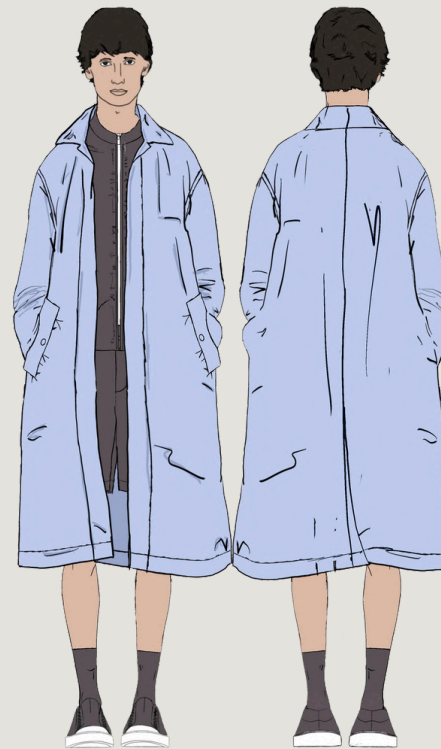
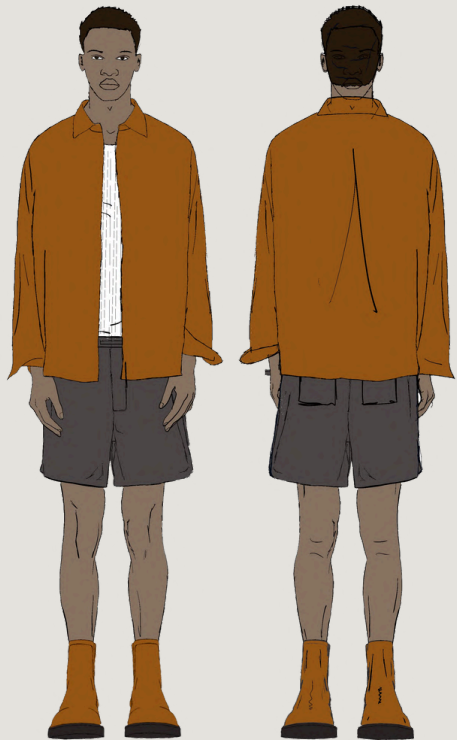


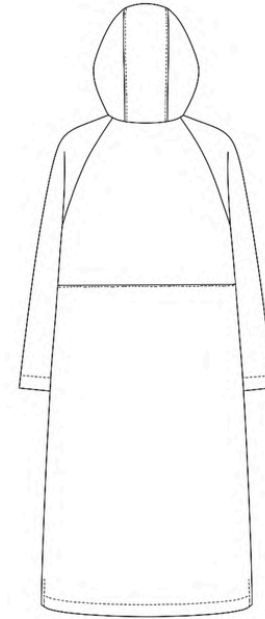
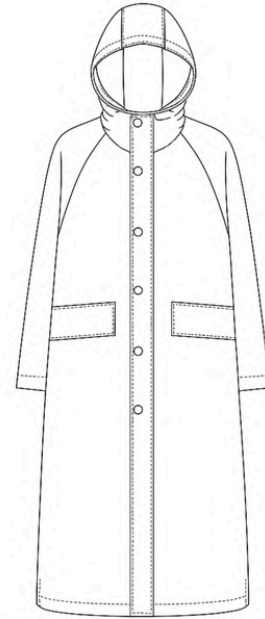
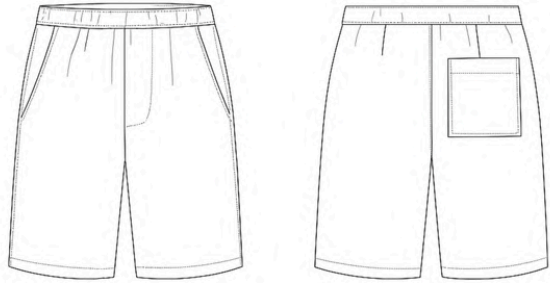
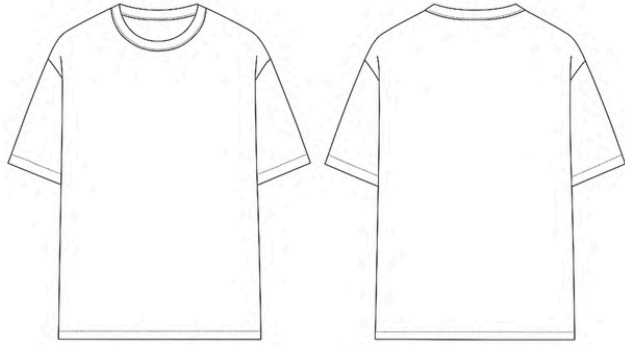


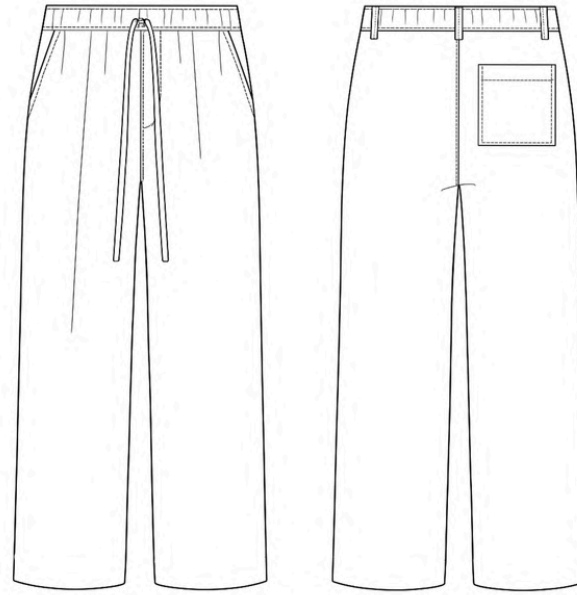
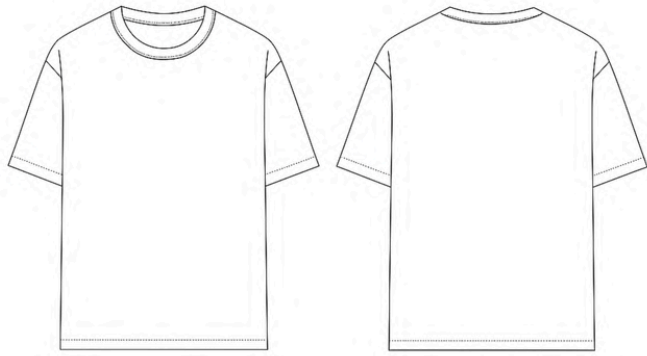


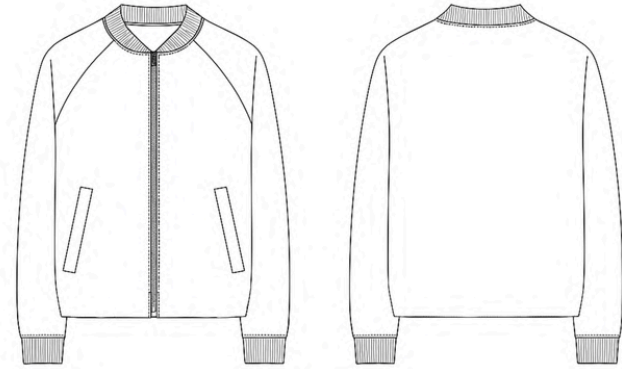
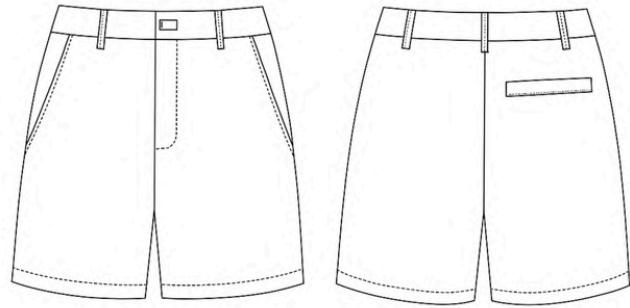


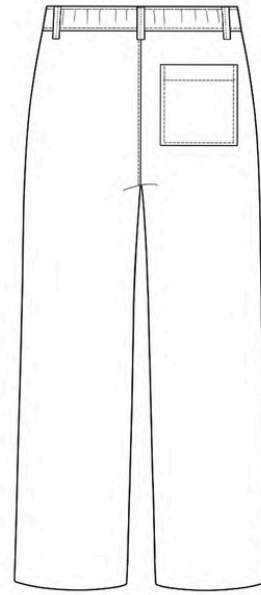
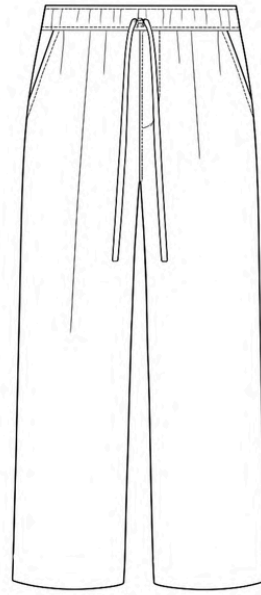
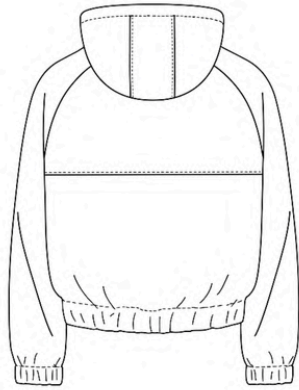
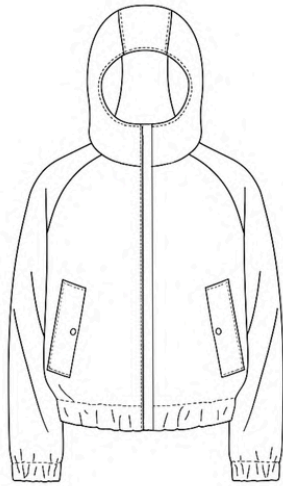


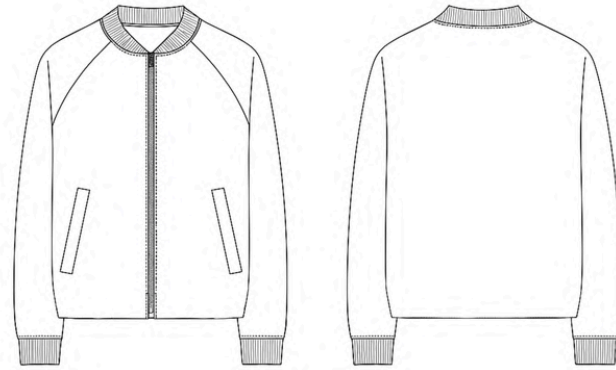
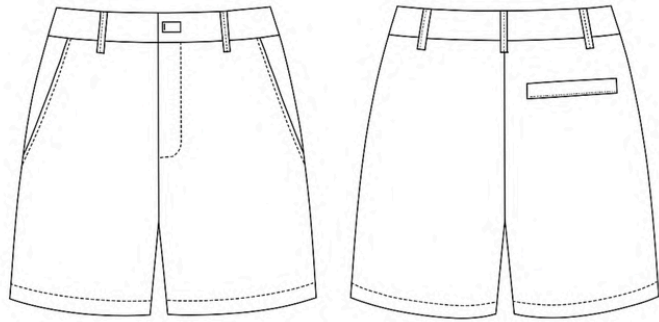


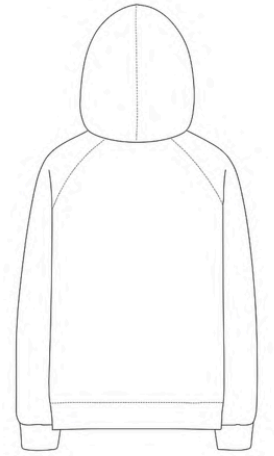
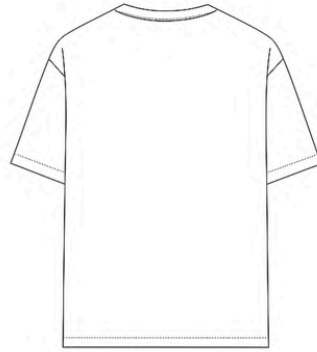
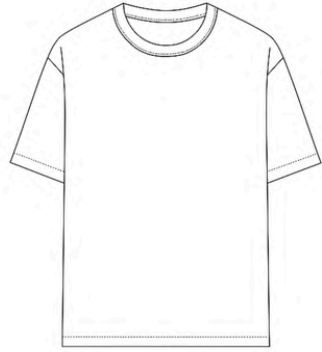
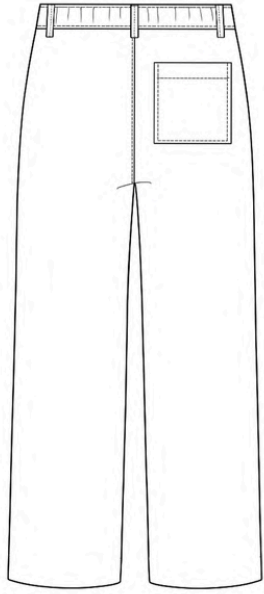
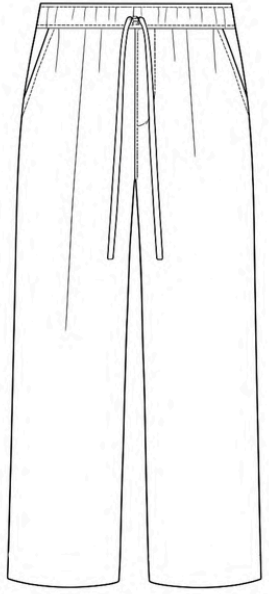


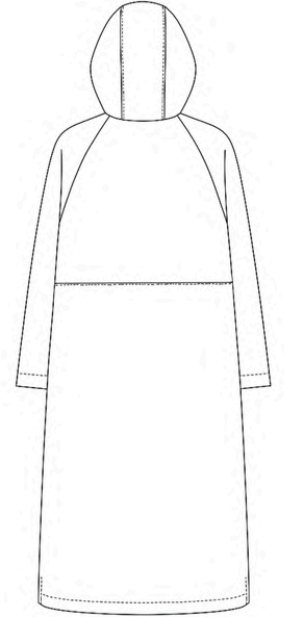
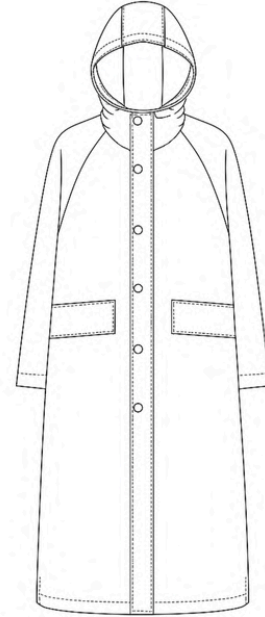
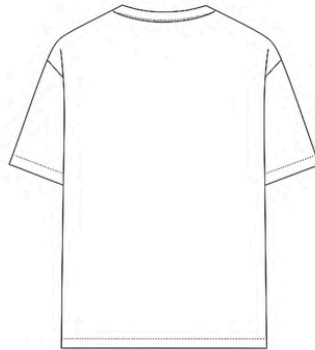
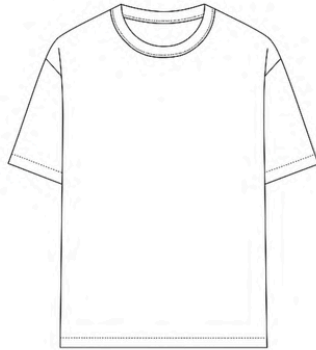
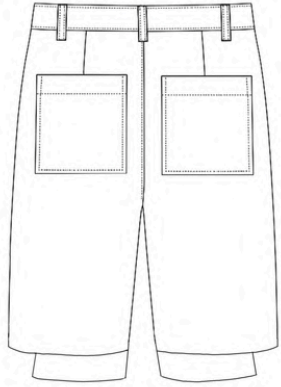
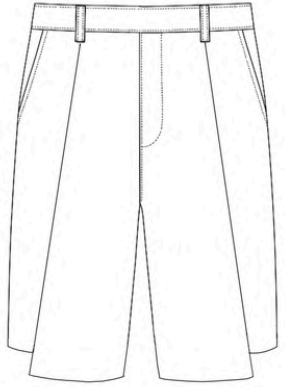


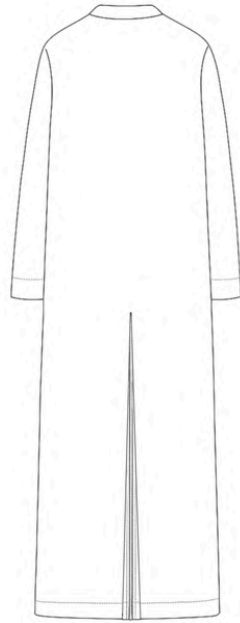
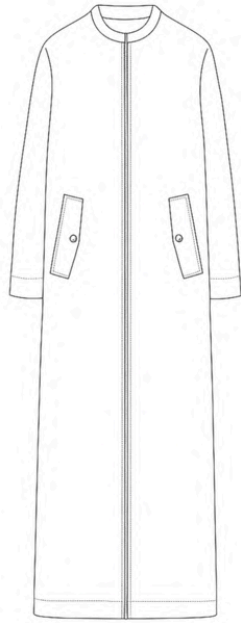


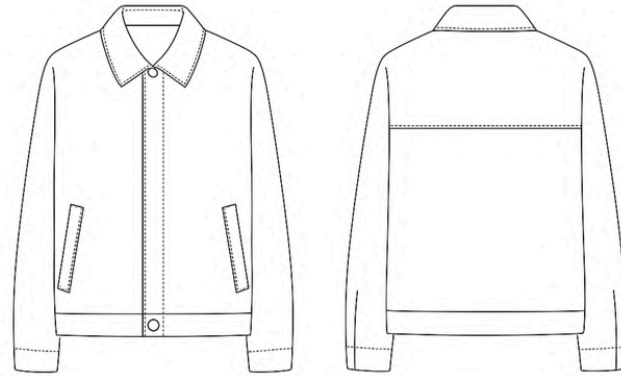
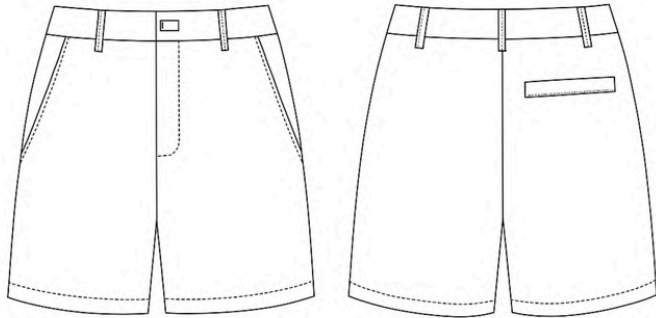


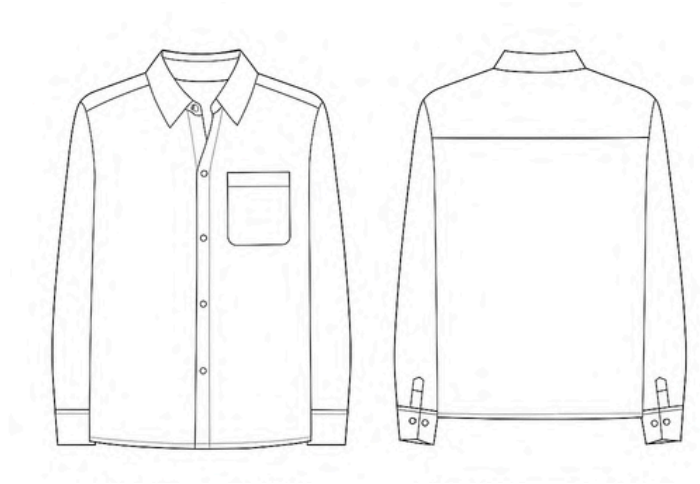


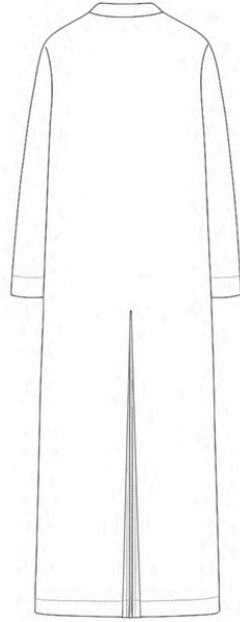
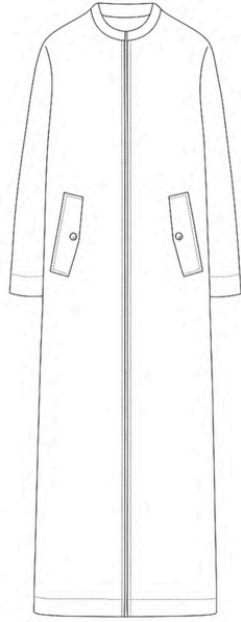


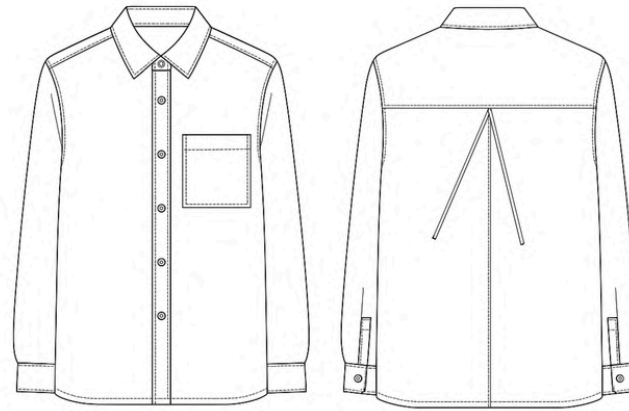
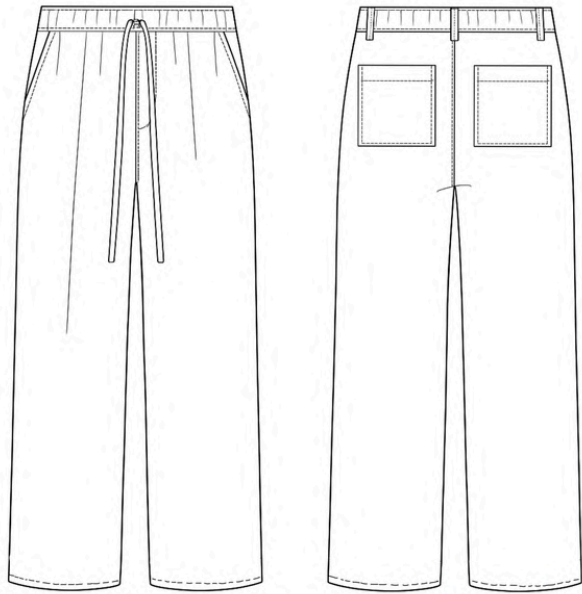


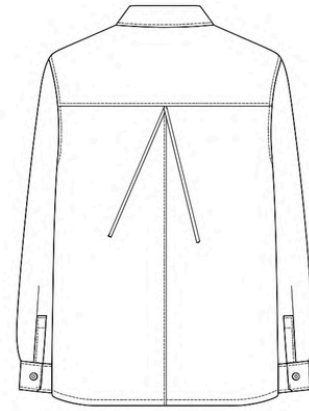
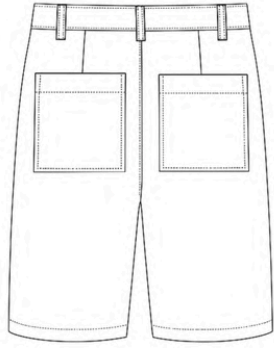
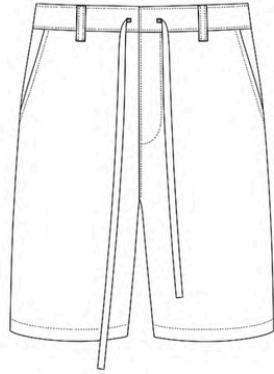


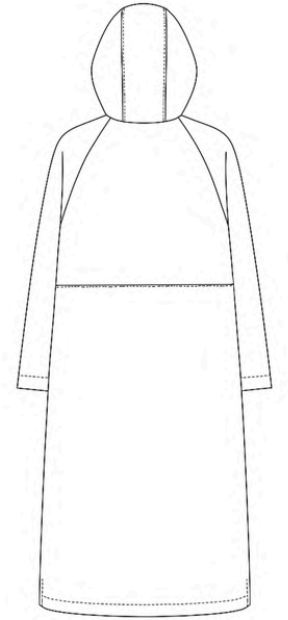
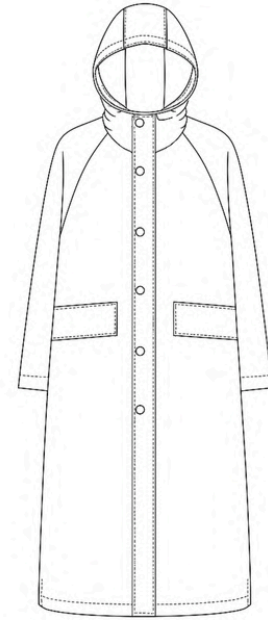
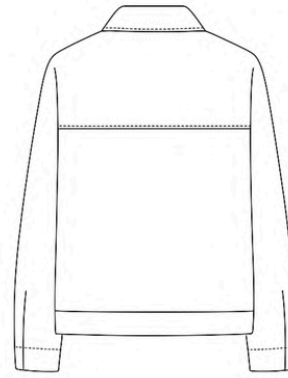


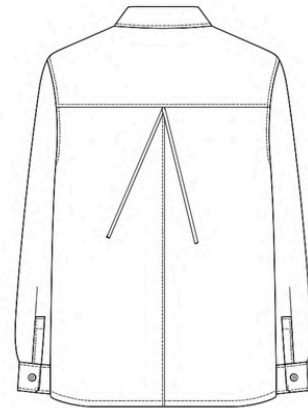
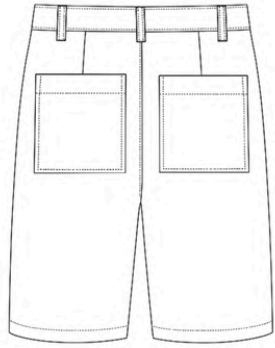
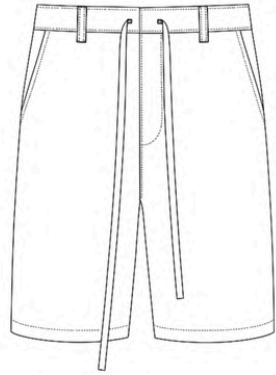


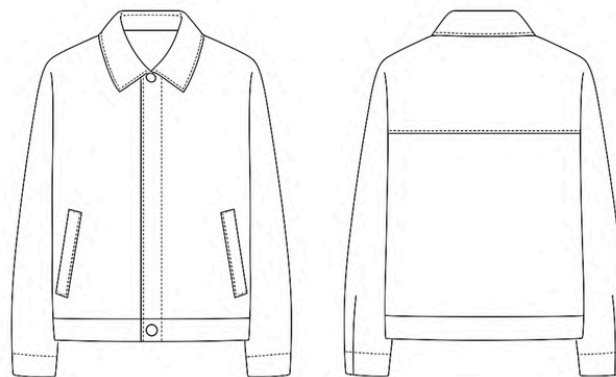
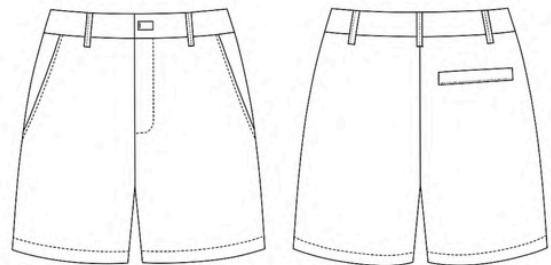


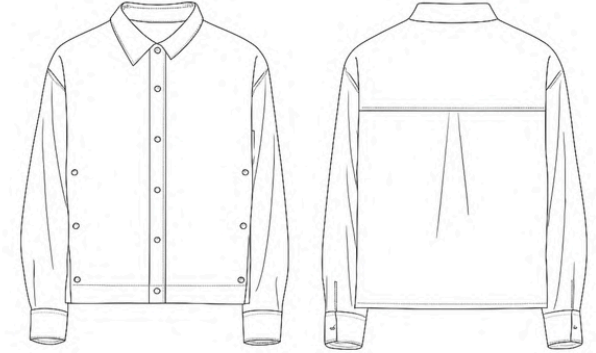
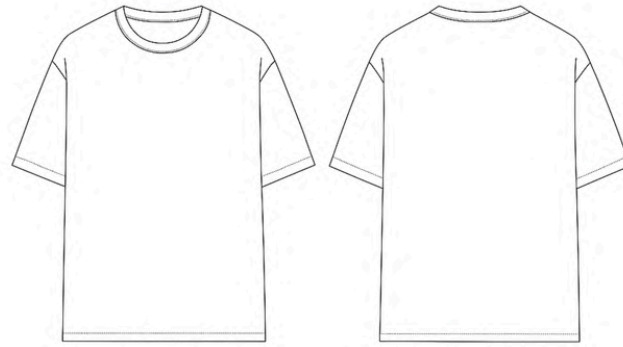
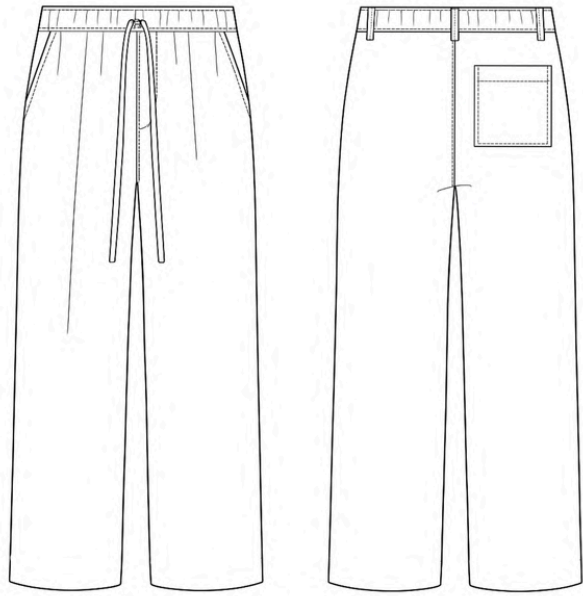


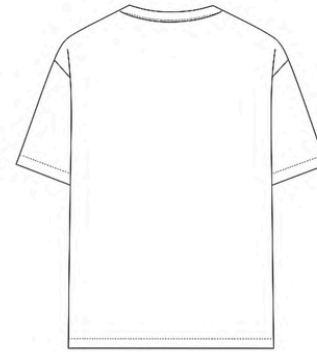
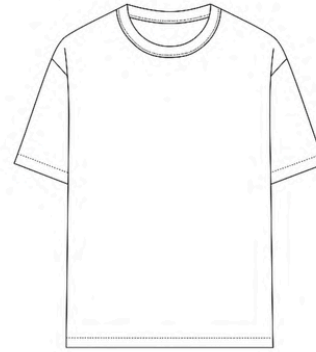
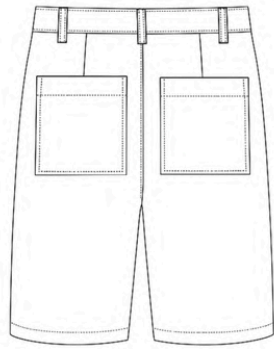
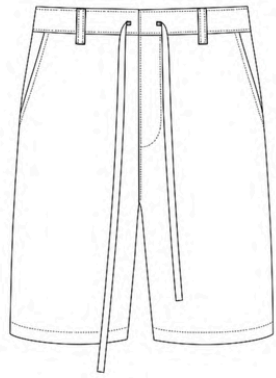


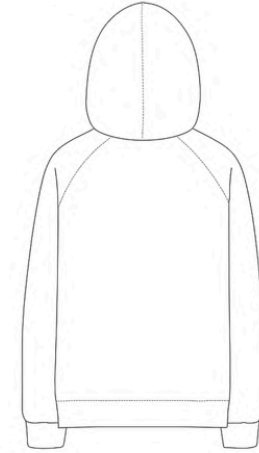
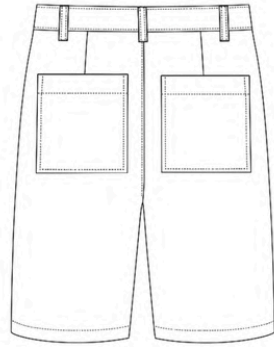
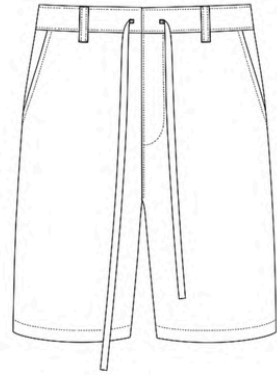


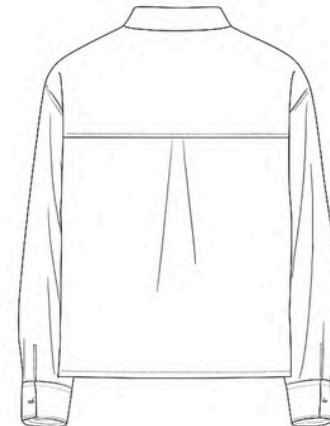
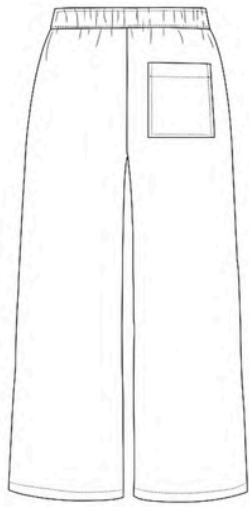
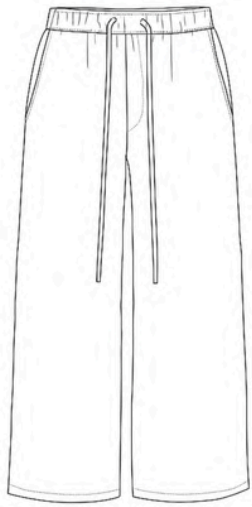






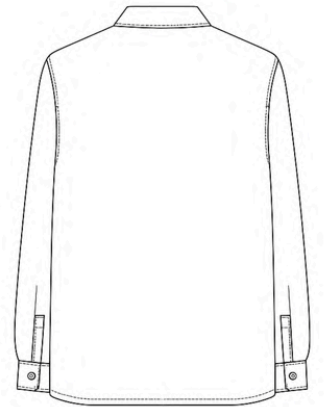
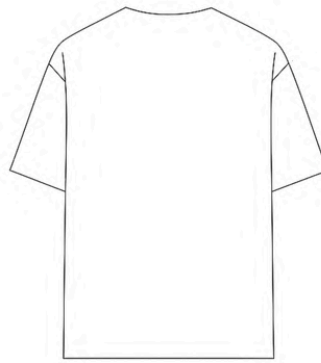
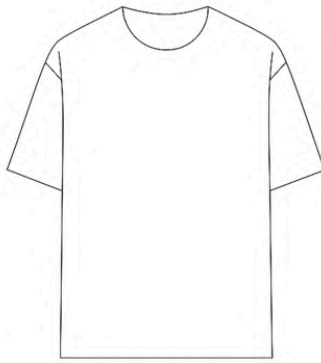


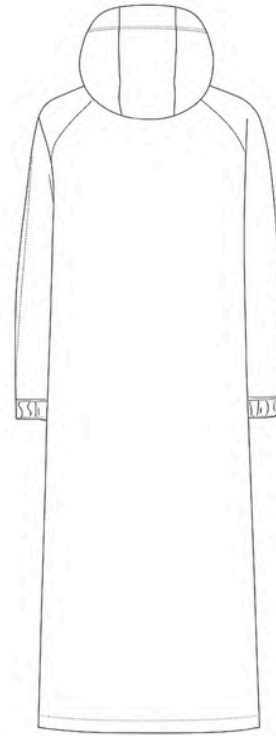
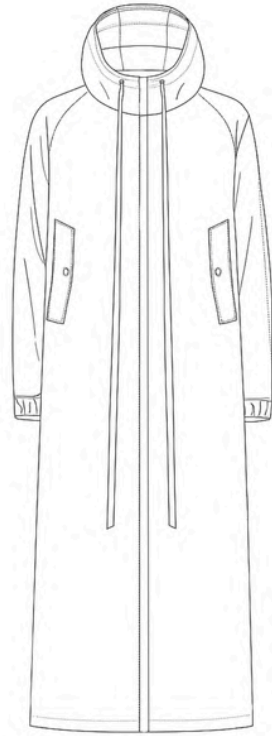
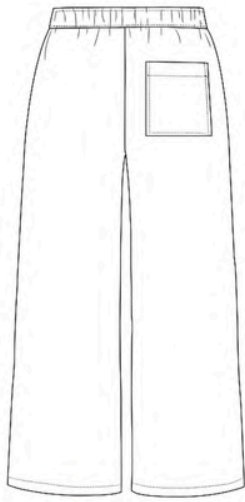
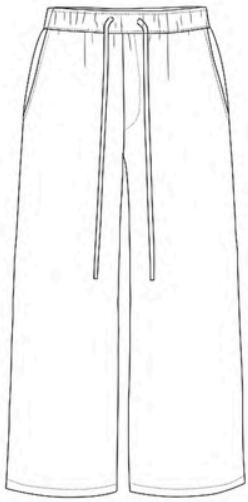


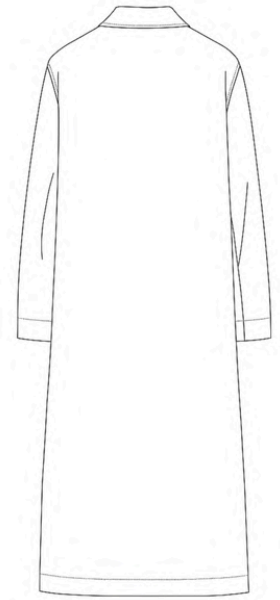
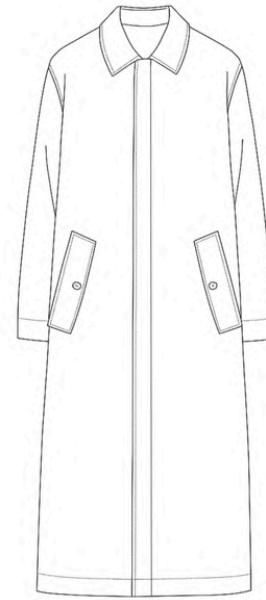
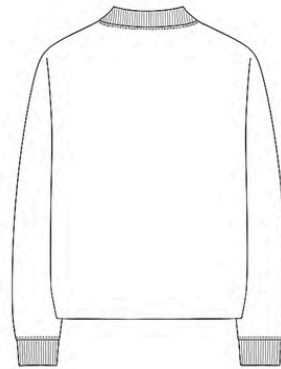
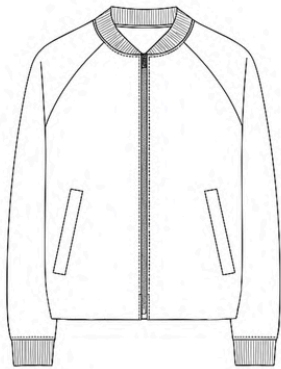


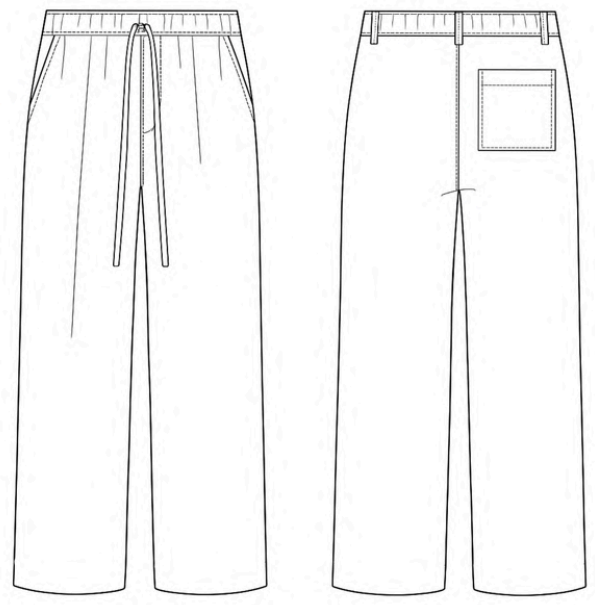
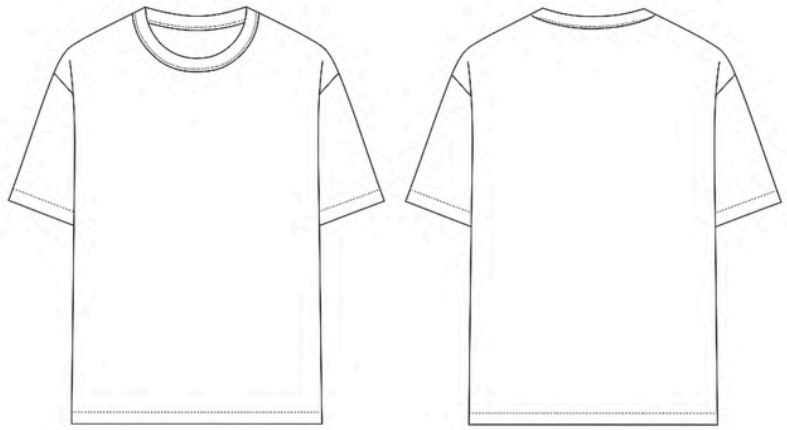
→ Cropped  
P+ (short)

→ (short)









# referências

- PITTA, Rocha. Obras e processos criativos. Acervo do artista.
- Vogue Runway. Coleções e desfiles de moda contemporânea. Disponível em: <https://www.vogue.com/fashion-shows>.
- ZEGNA. Coleções e arquivos da marca. Disponível em: <https://www.zegna.com>.
- THE ROW. Coleções e design minimalista. Disponível em: <https://www.therow.com>.
- AURALEE. Arquivos e apresentações de coleção. Disponível em: <https://auralee.jp>.
- LEMAIRE. Lookbooks e coleções. Disponível em: <https://www.lemaire.fr>.
- OUR LEGACY. Coleções e referências visuais da marca. Disponível em: <https://ourlegacy.se>.
- PIET. Coleções e design brasileiro contemporâneo. Disponível em: <https://www.piet.com.br>.